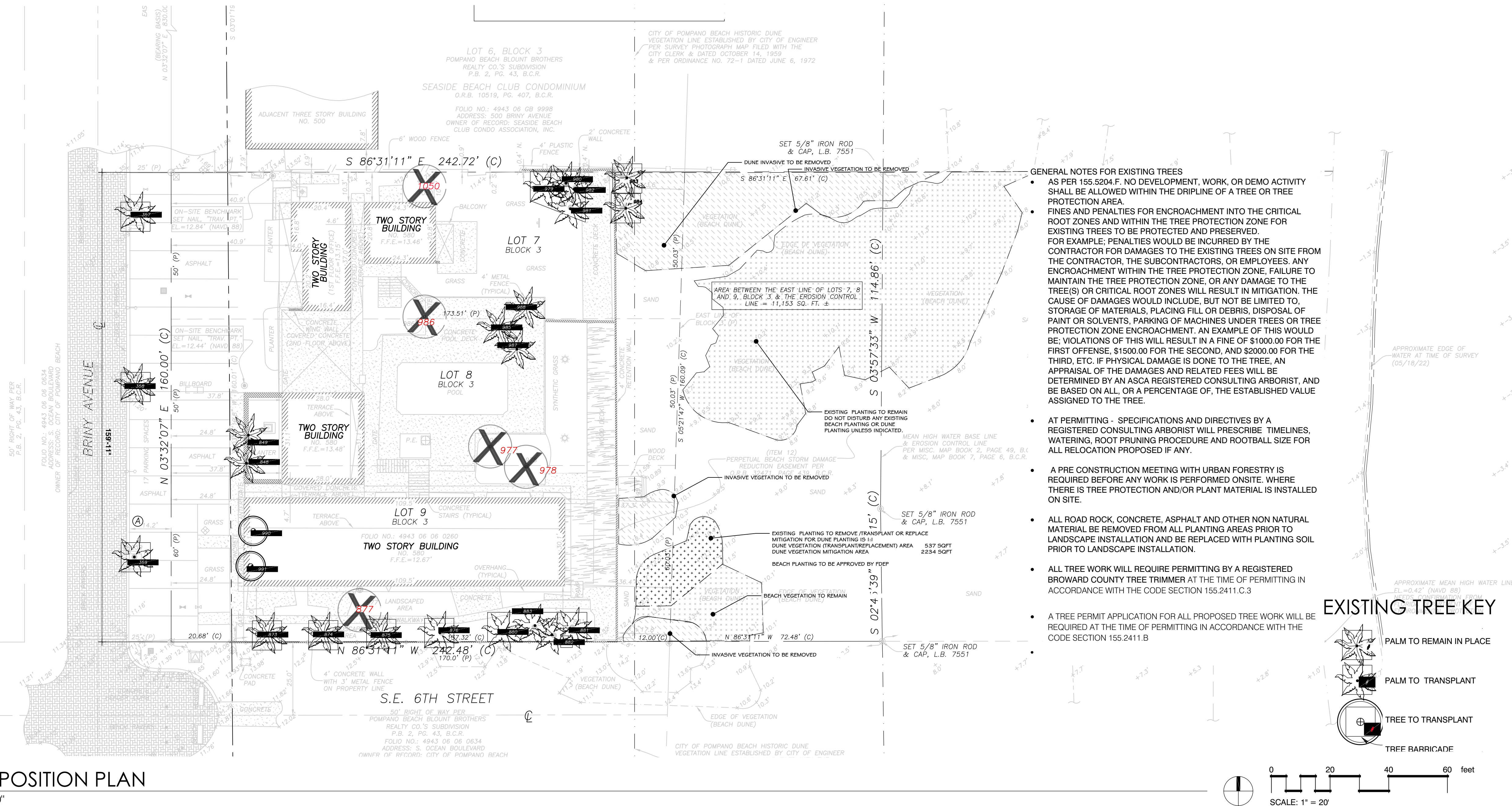




888 s andrews avenue, suite 300
Fort Lauderdale FL. 33316
office: 954.224.0432
LA# 6666983

DESIGNED DRAWN CHECKED

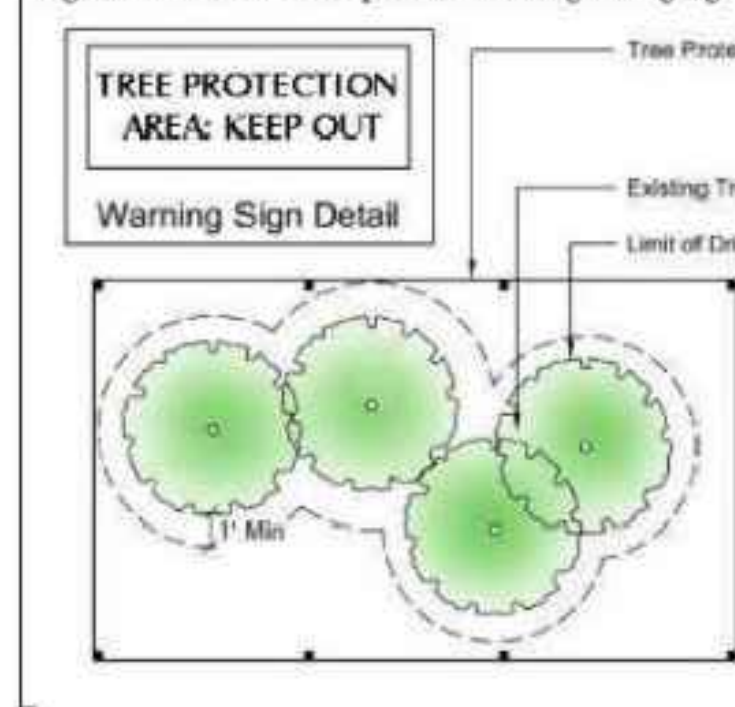


TREE DISPOSITION PLAN
SCALE: 1" = 20'-0"

#	Botanical	Common	DBH (IN)	Size (Hgt' X W')	PALM CT (FT)	Condition	Disposition	Mitigation	WholeSale VALUE	Retail X2.5
357	Phoenix dactylifera	Date Palm	12	25x30	15	80	Transplant	0	\$1,500.00	\$3,750.00
358	Phoenix dactylifera	Date Palm	12	25x30	15	80	Transplant	0	\$1,500.00	\$3,750.00
359	Phoenix dactylifera	Date Palm	12	25x30	15	80	Transplant	0	\$1,500.00	\$3,750.00
848	Cocos nucifera	Coconut Palm	12	25x30	15	80	Transplant	0	\$1,200.00	\$3,000.00
849	Cocos nucifera	Coconut Palm	12	25x30	15	80	Transplant	0	\$1,200.00	\$3,000.00
873	Hyophorbe lagenicaulis	Bottle Palm	14	8x15	5	90	Transplant	0	\$300.00	\$ 750.00
874	Hyophorbe lagenicaulis	Bottle Palm	14	8x15	5	90	Transplant	0	\$300.00	\$ 750.00
875	Hyophorbe lagenicaulis	Bottle Palm	14	8x15	5	90	Transplant	0	\$300.00	\$ 750.00
876	Hyophorbe lagenicaulis	Bottle Palm	14	8x15	5	90	Transplant	0	\$300.00	\$ 750.00
877	Washingtonia robusta	Washington Palm	12	6x6	4		REMOVE	Class 2 invasive	\$0.00	\$ -
880	Hyophorbe lagenicaulis	Bottle Palm	14	8x15	5	85	Transplant	0	\$300.00	\$ 750.00
881	Hyophorbe lagenicaulis	Bottle Palm	14	8x15	5	90	Transplant	0	\$300.00	\$ 750.00
882	Cocos nucifera	Coconut Palm	12	12x20	1	85	Transplant	0	\$50.00	\$ 125.00
883	Cocos nucifera	Coconut Palm	12	35x30	30	0	Transplant	0	\$1,200.00	\$3,000.00
977	Sabal palmetto	Sabal Palm	10	8x10	5	90	Transplant	0	\$200.00	\$ 500.00
978	Sabal palmetto	Sabal Palm	10	25x10	15	90	Transplant	0	\$200.00	\$ 500.00
979	Sabal palmetto	Sabal Palm	10	25x10	15	90	Transplant	0	\$200.00	\$ 500.00
980	Sabal palmetto	Sabal Palm	10	25x10	15	90	Transplant	0	\$200.00	\$ 500.00
981	Sabal palmetto	Sabal Palm	10	25x10	15	90	Transplant	0	\$200.00	\$ 500.00
982	Sabal palmetto	Sabal Palm	10	25x10	15	90	Transplant	0	\$200.00	\$ 500.00
983	Sabal palmetto	Sabal Palm	10	25x10	15	90	Protect in Place	0	\$200.00	\$ 500.00
984	Cocos nucifera	Coconut Palm	12	35x30	20	90	Protect in Place	0	\$1,200.00	\$3,000.00
985	Cocos nucifera	Coconut Palm	12	35x30	20	90	Transplant	0	\$1,200.00	\$3,000.00
986	Australian Pine	Casuarina equisetifolia	10	32x25			REMOVE	Class 1 invasive	\$0.00	\$ -
987	Australian Pine	Casuarina equisetifolia	6	25x20			REMOVE	Class 1 invasive	\$0.00	\$ -
988	Australian Pine	Casuarina equisetifolia	6.5	25x20			REMOVE	Class 1 invasive	\$0.00	\$ -
990	Cordia sebestena	Geiger Tree	4	15x15		85	Transplant	0	\$350.00	\$ 875.00
991	Cordia sebestena	Geiger Tree	4	15x15		85	Transplant	0	\$350.00	\$ 875.00
1050	Conocarpus erectus sericeus	Silver Buttonwood	4	12x12		60	REMOVE	1 tree	\$200.00	\$ 500.00
TOTAL TREE MITIGATION 2 tree or/ 6" DBH									\$500.00	
TOTAL TRANSPLANTS									22	
PROTECT IN PLACE									2	

TREE INVENTORY LIST

Figure 155.5204.F.2: Tree protection fencing and signage.



BENJAMIN KOUBEK

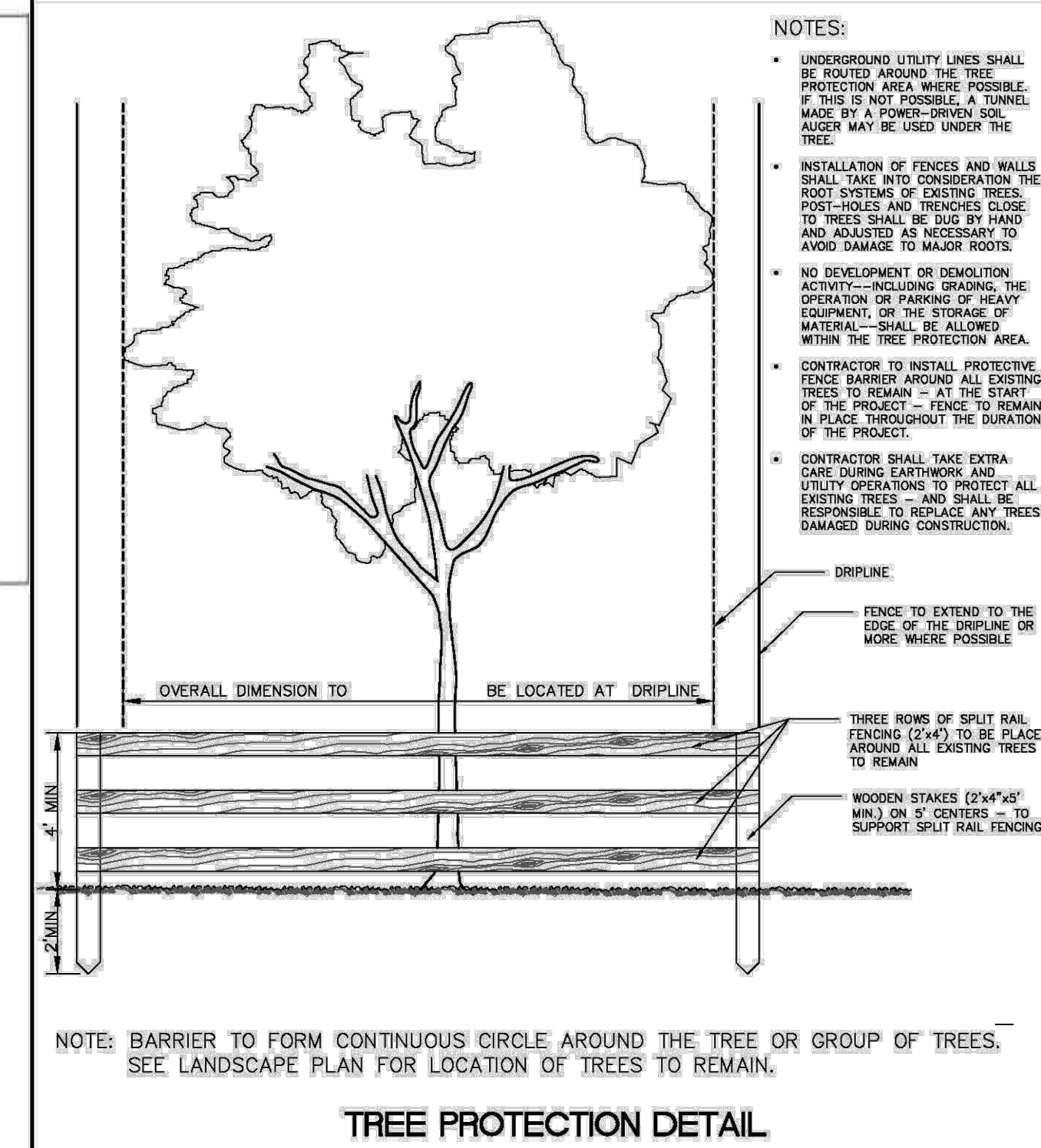
VERDEONE LLC

Certified Arborist, International Society of Arboriculture (ISA)
Certified Horticulture Professional, Florida Nursery Growers
& Landscape Association (FNLGA) 12864 BISCAYNE BLVD
#231

NORTH MIAMI FL 33181

Mobile: 321.439.5932

BENJAMINKOUBEK@GMAIL.COM



NOTE: BARRIER TO FORM CONTINUOUS CIRCLE AROUND THE TREE OR GROUP OF TREES, SEE LANDSCAPE PLAN FOR LOCATION OF TREES TO REMAIN.

TREE PROTECTION DETAIL

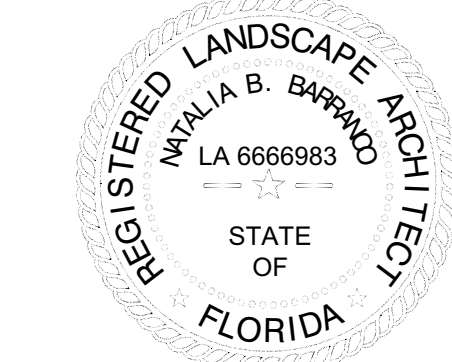
REVISIONS

DATE: 1/24/2024
COMM: 22019

580 BRINY AVE.

580 BRINY AVE.
POMPAHO BEACH, FL

Natalia Barranco
c=US, sn=Barranco,
givenName=Natalia, email=natalia@b-
rla.com, cn=Natalia Barranco
2024.06.30 19:14:52 -04'00'



TREE DISPOSITION PLAN

SITE PLAN APPROVAL

L-1.0